



## SERVOTEC UNIVERSAL TESTING MACHINE 500N (DESK TOP VERSION)

Standard: BSEN 10002-1, ISO 7500-1, ASTM A370

### Tensile & Compression

TT Servotec Fully Automatic Universal Tensile Machine out tester adopts DC speed regulating servomotor & reduction gears as the power source. It real time displays test data & test status with LCD module. Professional designed servo control system realizes the PWM pulse width modulation control mode. It really comes up to with test speed closed loop control mode. It is controlled by single chip automatically control.

### Main Use & Range

Used for measurement & test of mechanical property & analytical study of metal, non-metal & composite material, such as aviation, petrochemical, machinery manufacture, wire, cable, textile, fiber, plastic, rubber, ceramic, food, medicine packaging, aluminium plastic tube, plastic door & window, geo-textile, film, wood, paper, metal material & manufacture industry & etc.

It can record the max. test force, fracture value, yield value, max. compression value automatically. It can also calculate the fracture extension & all kind of strength value manually. The RA232 connector can do the function of communicating with computer to do the data work. It is a essential equipment for manufacture, construction unit, product quality supervision & inspection bureau & building material test department. It also could be used in the university for teaching purpose.

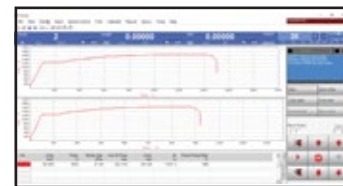
### Main Technical Parameter :

<b>Model Number</b>	<b>TT 6000 X / 025N</b>
Max Test Force	500 N
Structure Type	Twin Rigid Column With Single High Precision Ball Screw ( Desk Top Version )
Traveling Space	950 mm (exclude fixtures)
Width Space	350 mm
Test Force Accuracy	±0.8%
Test Speed Range	0.01 - 500mm/min
Load Resolution	1/250 000
Measuring Range	1% - 100% Full Scale
Load Unit	MN, N, † & kN (selectable)
Curve Display	<b>Selectable Axial Parameters:</b> <b>Y-axis</b> - time, load, displacement, deformation, stress, strain. <b>X-axis</b> - time, load, displacement, deformation, stress, strain.
Data Display	Max. Force, Tensile Strength, Upper & Lower Yield, Specimen Details, etc.
Main Drive Unit	Precision Servo Drive & Servo Motor
Software	TestMaster
Safety Feature	Emergency Stop, Over Load Protection, Upper & Lower Limit Sensor with Auto Stop
Power Source	220 ~240V, 600W, 4A, 1Ph, 50/60 Hz, 0.8Hp
Dimension	660(L) x 440(W) x 1700(H) mm
Approx Weight	220 kg

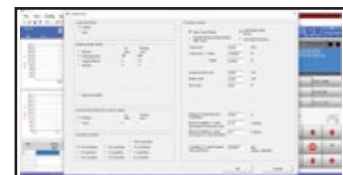
### Unit Consists Of :

Model Number	Parts Description	Qty
TT LC – 500N	500 N Load Cell	1 Unit.
TT LT – 001	Compatible Desktop Unit	1 Unit.
TT 6ST – PC1	Desktop Computer Unit c/w Operation and the Software	1 Unit

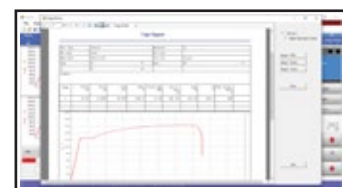
\*1 Copy of Manual Instruction



Test Curve Page



User Setting Page



Test Result Page

### Optional Accessories :

Model Number	Parts Description
TT CD - 100	Computer Desk
TT CP - 200	Computer Printer
TT 6000 HD - B426	Electronic Extensometer (Large Deformation)
TT 6000 HD - B426 - 3	Electronic Extensometer (Metal)
Tensile Test Accessories (Refer to: Tensile Optional Accessories)	

\*1 Copy of Manual Instruction

## Tensile Test Optional Accessories



Model Number	Grips Type	Grips Technical Specification
TT 6000 B401	Pneumatic Grips (200kg)	Capacity : 50kg Specimen : Adhesive/Paper Products
TT 6000 B402	Mechanical Aluminum Flat Grips	Capacity : 20kg/100kg Specimen : Adhesive
TT 6000 HD-B402	Mechanical Iron Vice Flat Grips	Capacity : 500kg Specimen : Waterproof material, Cloth
TT 6000 HD-B403	Mechanical Piller Grips (200 - 500kg)	Capacity : 500kg Specimen : Universal
TT 6000 HD-B404	Mechanical Wedge Grips (2T)	Capacity Specimen : Rubber
TT 6000 HD-B405	Mechanical Wedge Grips (5T)	Capacity : 5 Ton Specimen : Metal/Rubber
TT 6000 HD-B407	Mechanical Wedge Grip (10T)	Capacity : 10 Ton Specimen : Metal/Rubber
TT 6000 HD-B408	Mechanical Rubber Grip	Capacity : 100kg Specimen : Rubber/Dumbbell Shape
TT 6000 HD-B409	Mechanical Rubber Grips	Capacity : 50kg Specimen : Rubber/Dumbbell Shape

Model Number	Grips Type	Grips Technical Specification
TT 6000 HD-B410	Mechanical Single Eccentric Grips	Capacity : 50kg Specimen : Rubber/Dumbbell Shape
TT 6000 HD-B411	Mechanical Rubber Clamp	Capacity : 200kg Specimen : Rubber/Dumbbell Shape
TT 6000 HD-B412	Mechanical 90° Peel Strength Grips	Capacity : 50kg Specimen : Adhesive
TT 6000 HD-B413	Mechanical Double Wheel Grips	Capacity : 200kg Specimen : Rubber/Silicone
TT 6000 HD-B414	Thread Vice Clamp	Capacity : 100kg Specimen : Thread
TT 6000 HD-B415	Ribbon Clamp	Capacity : 500kg Specimen : Ribbon
TT 6000 HD-B416	Ribbon Clamp	Capacity : 2T Specimen : Ribbon
TT 6000 HD-B417	Mechanical Nipper Pliers Vice Gript	Capacity : 20kg Specimen : Electronic Component



Model Number	Grips Type	Grips Technical Specification
TT 6000 HD-B418	H-Shaped Holder	Capacity : 2T Specimen : Glass Element/Composite Panels Class
TT 6000 HD-B419	Compression Platen (100mm/150mm 200mm)	Specimen : Rubber Stress Test, Bottles Lunch Boxes
TT 6000 HD-B420	Three Point Bending Jig	Specimen : Rubber
TT 6000 HD-B420-1	Three Point Bending Jig	Specimen : Metal
TT 6000 HD-B420-2	Three Point Bending Jig	Specimen : Composite Panels
TT 6000 HD-B421	Four Point Bending Jig	Capacity : 500kg Specimen : Rubber/Metal
TT 6000 HD-B423	Mechanical Paper Tensile Grips	Capacity : 200kg Specimen : Paper, Plastic
TT 6000 HD-B424	Mechanical Zipper Grips	Capacity : 50kg Specimen : Fabric & Zipper Teeth Peeled

Model Number	Grips Type	Grips Technical Specification
TT 6000 HD-B425	Mechanical Zipper Grip	Capacity : 50kg Specimen : Zipper
TT 6000 HD-B426	Extensometer	
TT 6000 HD-B426-1	Extensometer	
TT 6000 HD-B426-3	Metal Extensometer	
TT 6000 HD-B427	Monitor Needle Grips	Capacity : 10kg Specimen : Display
TT 6000 HD-B428	Belt Tensile Grip	Capacity : 1T Usage : Tensile
TT 6000 HD-B429	Mechanical Ring Initial Tack Grips	Specimen : Glass Material
TT 6000 HD-B430	Pneumatic Wire Clamp	Capacity : 50kg Specimen : Wire



Model Number	Grips Type	Grips Technical Specification
TT 6000 HD-B431	Mechanical Paper Grip	Capacity : 50kg Specimen : Papper
TT 6000 HD-B432	Puncture Grip	Capacity : 50kg Specimen : Film
TT 6000 HD-B433	Mechanical Leather Tear Holder	Capacity : 100kg Specimen : Leather
TT 6000 HD-B439	Mechanical Peeling Clamp Holder	Specimen : Tape

Model Number	Grips Type	Grips Technical Specification
TT 6000 HD-B443	Mechanical Peel Test Steel Holder	Thickness : 1.5mm Size : 50* 150mm
TT 6000 HD-B444	Mechanical Film Grip	Capacity : 0.3kg Specimen : Film
TT CP 100	Computer Printer	
TT CD 200	Computer Desk	